



**SOUTH AUSTRALIA INTERNATIONAL 2018**

**ADELAIDE, AUSTRALIA**

**13-16 SEPTEMBER**

**INTERNATIONAL CHALLENGE**

**BADMINTON SA**  
The World's Fastest Racquet Sport

 **Badminton  
Australia**

 **BADMINTON  
Oceania**

 **BWF** **BADMINTON  
WORLD  
FEDERATION**

# South Australia International 2018

## Adelaide, AUSTRALIA

### 13-16 September

- National Association:** Badminton Australia  
Unit 15, No 8 Techno Park Drive, Williamstown, VIC 3016, AUSTRALIA  
Phone: +61 (3) 93974722  
Website: [www.badminton.org.au](http://www.badminton.org.au)
- Event Organiser:** South Australia Badminton Association  
Website: [www.badmintonsa.org.au](http://www.badmintonsa.org.au)
- Event Director:** Simon Oaten  
Email: [ogatense@gmail.com](mailto:ogatense@gmail.com)  
Phone: 0434 624 810
- Event websites:** [www.facebook.com/events/1132600010213245/](https://www.facebook.com/events/1132600010213245/) and  
[www.badmintonsa.org.au](http://www.badmintonsa.org.au)
- Dates:** **Thursday 13 – Sunday 16 September 2018**
- Venue:** Titanium Security Arena  
44A Crittenden Road, Findon, South Australia
- Sanctioned by:** Badminton Oceania and Badminton World Federation –  
International Challenge
- Prize Money:** The prize money will be paid directly to players at the completion of the event  
in Australian dollars.
- Referee:** Lynne Nixey  
Email: [nixey4@yahoo.co.nz](mailto:nixey4@yahoo.co.nz)  
Phone: +64 21 526603
- Deputy Referee:** TBC
- Entries close:**  
**International entries** close Tuesday 14 August 2018, 23:59 hours BWF Headquarters time, (+8:00 hours  
GMT)  
**Australian Player entries** close Tuesday 07<sup>th</sup> August 2018, 23:59 local time



**Entries:**

All players in the tournament will be deemed to have read and accepted the conditions under which the tournament events are to be conducted. The competition regulations of the BWF shall apply.

The organisers will NOT be responsible for any injury sustained, at any time, by any player or official arising from their participation in this Tournament. Any costs incurred for medical treatment and/or hospitalisation shall be borne by the Member Association of the player/official concerned.

All International entries are to be submitted online by the competitors National Badminton Association (M.A)

Member Associations are to log onto South Australia International 2018:

<https://bwf.tournamentsoftware.com/sport/tournament.aspx?id=7C0DF9D6-6DC1-4026-B98F-7EB294857E0F>  
and submit the entries online.

A username and password is required to submit entries. This can be obtained from the BWF.

Please contact Shan Ramachandran at [s.ramachandran@bwfbadminton.org](mailto:s.ramachandran@bwfbadminton.org)

The online entry page will automatically close on TUESDAY 14 August 2018 at 23:59 hours BWF Headquarters time (+08:00h GMT) and you are required to submit the entries on time. Late entries will not be accepted.

After the closing date, the BWF Online Entry System will send a notification to all participating Member Associations confirming receipt of final entries. Receipt of this notification is the conclusive evidence of receipt of entries before the deadline. The Member Associations should contact BWF immediately if such notice is not received by the Wednesday (next day of the entries closing date) by noon BWF Headquarters time (+08.00h GMT) following close of entries.

If no objection is received by BWF by Thursday 16 August 2018 (second day after the entries closing day) 23.59 hours BWF Headquarters time (+08.00h GMT) following the close of entries, the entries shall be deemed to be correct. No complaints / objections shall be entertained after this point.

**All entries must be submitted online.**

Australian Entries Only:

Please note – All Australian entries can only be submitted to BWF by Badminton Australia. **Australian entries close Tuesday 7th August 2018** at Badminton Australia office. This is to allow for checking and endorsement of all the Australian entries.

Australian entries must be submitted on tournament software.

<http://www.tournamentsoftware.com/sport/tournament.aspx?id=7FD5FB12-4050-4A44-BFD9-840240CED939>

Full payment must be paid prior to the start of the tournament.



**Events:**

Event	Entries		Qualifying Round Maximum entries
	Main Draw	Qualifiers	
Men's Singles	56	8	16
Women's Singles	28	4	8
Men's Doubles	28	4	8
Women's Doubles	28	4	8
Mixed Doubles	28	4	8

**Entry Fees:**

All players are required to pay entry fees.

The entry fee is \$100AUD per player.

MA's will be invoiced on 21<sup>st</sup> August 2018, with payment due by 4<sup>th</sup> Sept 2018.

No refunds for withdrawals will be given after 28 August 2018.

**Seedings and Draws:**

Entries Close	14 August 2018
World Ranking date for M & Q	16 August 2018
Publish M & Q	17 August 2018
World Ranking date for Seeding	23 August 2018
Publish Seeding Report	24 August 2018
Last Date for Withdrawal without penalty	27 August 2018
Draw Date	28 August 2018

**Prize Money: \$25000USD as below**

Prize money will be converted from USD and paid in AUD at the event

	MS	WS	MD (Pair)	WD (Pair)	XD (Pair)
<b>Winner</b>	\$2250	\$2250	\$2250	\$2250	\$2250
<b>Runner-up</b>	\$1125	\$1125	\$1125	\$1125	\$1125
<b>Semi-Finalist (2)</b>	\$375	\$375	\$437.50	\$437.50	\$437.50
<b>Quarter-Finalist (4)</b>	\$218.75	\$218.75	\$187.50	\$187.50	\$187.50

**Hours of Play:**

<b>Thursday 13 September</b>	Qualifying Rounds	From 9am	6 courts
	Main Rounds	From 1pm	6 courts
<b>Friday 14 September</b>	Main Rounds	From 9am	6 courts
<b>Saturday 15 September</b>	Quarter Finals	From 10am	6 courts
	Semi – Finals	From 5pm	2 Courts
<b>Sunday 16 September</b>	Finals	From 10am	1 court

**\*\*\*The above times and schedule may be changed at the discretion of the Referee and Event Organiser\*\*\***

All matches will be scheduled to time.

Players must be available to play 10 minutes before their scheduled time.

#### **Practice Courts:**

Practice courts at the tournament venue will be available as from Wednesday 12 September 2018, 3pm.

Bookings to be made directly with the Event Director: [ogatense@gmail.com](mailto:ogatense@gmail.com)

#### **Meeting Times:**

The Managers meeting will be held at the Titanium Security Arena – Wednesday 12 September at 7pm.

All countries to ensure they have a representative at this meeting.

*It is compulsory that all team managers must attend the team managers meeting. Failing to attend the meeting a Member Association may be fined USD\$250 by Badminton Oceania. Member Associations can make a request someone to represent them at the meeting as long as the Referee is advised in advance.*

#### **Withdrawals:**

Will be managed according to the BWF regulations.

Withdrawals after **Monday 27 August 2018** shall automatically attract withdrawal fees as per BWF regulations.

Withdrawals until this date must be initiated through online entry system by logging on to the tournament link used for sending the entry. Withdrawals after that date must be informed by e-mail to the Event Director [ogatense@gmail.com](mailto:ogatense@gmail.com) and the Referee [nixey4@yahoo.co.nz](mailto:nixey4@yahoo.co.nz) as soon as possible.

Withdrawals after players arrive at the venue, notification of withdrawal must be made by the Team Manager and/or Player to the Referee in person.

#### **Transport:**

The closest airport is **Adelaide International Airport**. Pick up from **Adelaide International Airport** will be provided, providing the players are staying at the tournament official accommodation.

Details must be provided no later than Monday 03 September 2018 on the correct form, for pick-up to be arranged.

Any request after this date will not be accepted.

Requests for a refund of taxi charges will not be entertained.

Transport will **ONLY** be provided to players and officials staying at the official tournament accommodation venue: Quest Apartments, 82 King William Street, Adelaide

\*\*\*This includes airport pick-up and drop-off, transport to practice and the tournament venue\*\*\*

#### **Visa:**

If a visa is required to enter Australia, please complete the Visa Form and email to [ogatense@gmail.com](mailto:ogatense@gmail.com)

Please ensure that you allow sufficient time for the visa/s to be processed.

**Competition Rules and Regulations:**

The tournament will be conducted in accordance with the BWF General Competition Regulations and as per the Badminton Oceania Grade 3 Tournament Regulations.

**Shuttles:**

BWF approved YONEX shuttles will be provided, 2 speeds will be available.

**Clothing and Advertising:**

Clothing and advertising are in accordance with the BWF General Competition Regulations (sections 19-23). The name of the player is Mandatory on the back of all player's shirts, the country name is optional however if it is on the shirt it must comply with BWF regulations.

Players should ensure that they read these regulations and that their clothing complies with these regulations.

**Doping Control:**

The BWF Anti-Doping Regulations apply.

Players competing in this tournament are subject to drug testing under BWF Anti-Doping Regulations and the regulations and the provisions of Australian Sports Anti-doping Authority – [www.asada.gov.au](http://www.asada.gov.au)

The BWF Anti-Doping Regulations can be viewed at – [www.bwfbadminton.org](http://www.bwfbadminton.org)

**Additional Information:**

A cafeteria will operate during the hours of play at the tournament venue.

A physiotherapy service will be available free of charge to players.

The Winner and Runner-up in every event will be presented with a trophy and prize-money

# Accommodation Official Tournament Hotel



## Quest King William South

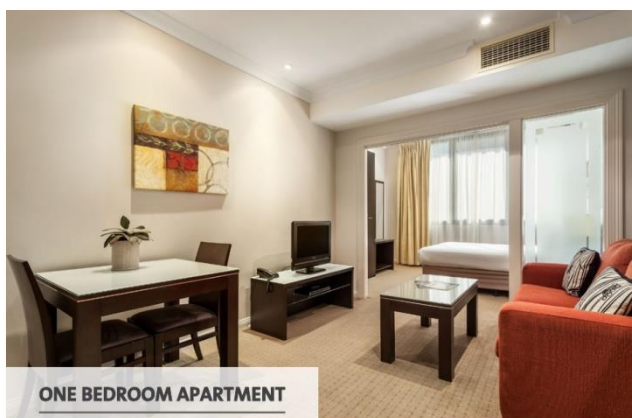
379 King William Street, Adelaide SA 5000 Australia | Tel: [+61 8 8206 6500](tel:+61882066500)

Perfectly placed in the heart of Adelaide, Quest King William South is an excellent Adelaide apartment hotel accommodation choice. Adelaide Oval, the Casino, Central Markets and China Town are all a short walk from the hotel.

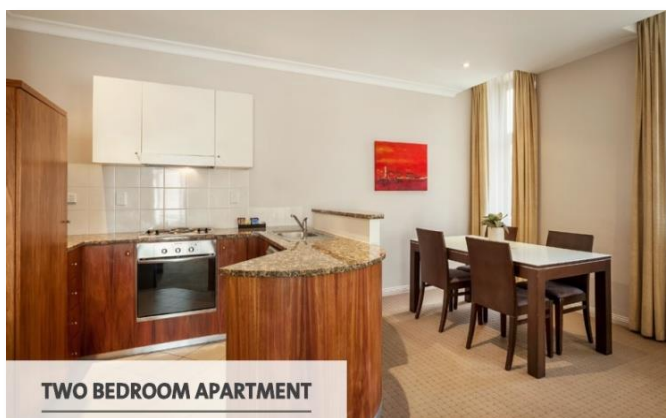
Book online via <https://www.questapartments.com.au/properties/sa/adelaide/quest-king-william-south/> and use Promo Code **BADMINTON18** to get special rate or book direct with Quest King William South and mention the Promo Code.



STUDIO



ONE BEDROOM APARTMENT



TWO BEDROOM APARTMENT



### Accommodation Tariffs

Apartment Type	Nett Rate Per Night	Guests Per Apartment	Bedding Configurations
Studio Apartment	\$152.00	1-2	2x Singles or 1x King
1 Bedroom Apartment	\$167.00	1-2*	2x Singles or 1x King *
2 Bedroom Apartment	\$247.00	1-5*	2x King or 4x Singles *

\*Sofa Beds / Rollaway can be added for an additional \$40.00 per night

\*\*Due to operational requirements and at the hotels discretion a 2 bedroom interconnecting apartment consisting of a Studio & 1 Bedroom maybe allocated in place of a standalone 2 bedroom apartment.

### Ancillary Tariffs

Ancillary Type	Daily Cost	Additional Information
Internet	WiFi Included	No Data Limit
Car parking	\$25.00 per day	Off Site 24 hours Secure Parking. Reservation required prior to arrival
Breakfast Options	Included <b>Studio &amp; 1 Bedroom apartment:</b> 2 person maximum <b>2 Bedroom apartment:</b> 4 person maximum <b>Additional at \$15.00 per person</b>	Available at our onsite café; Café Society

Transport to and from the airport and the Tournament venue will only be available to players staying at the official tournament accommodation